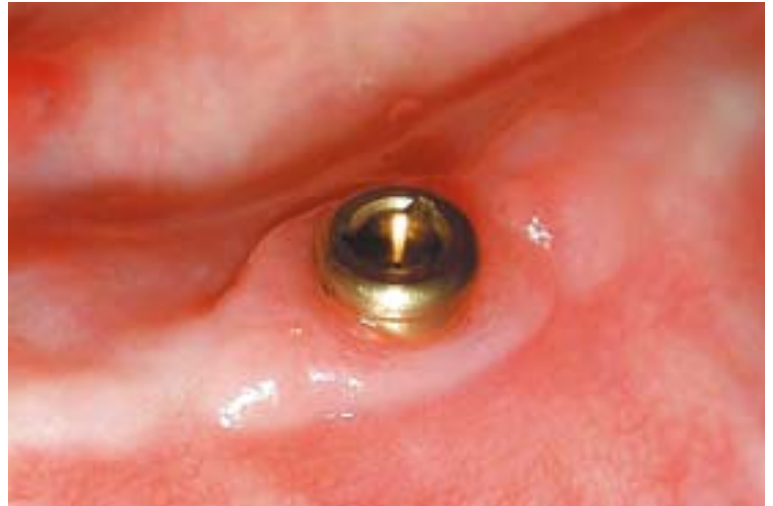


Simplicity and the Mandibular Overdenture

How an overdenture attachment system with a self-aligning design can help to secure a mandibular complete overdenture.



1. Panoramic radiograph on presentation.



2. Optimal soft tissue health around healing abutments as a result of the Conical Seal Design.



3. Astra Tech interforaminal fixtures *in situ*.



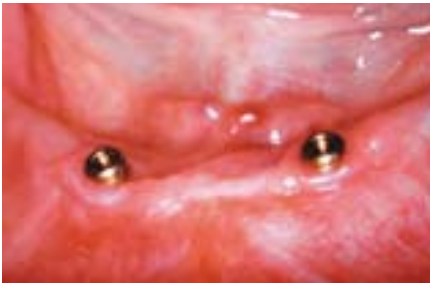
4. Mucosal cuff measurement.



5. Locator abutment attached to Core Tool. Radiographic verification not required for the self-guiding abutment connection.



6. Torque application using multi-purpose Core Tool.



7. Locator Attachments *in situ*.



8. Impression copings positioned over the abutments.



9. Localised reline to pick up impression coping within the denture.



10. Abutment replicas placed into copings ready for model casting.



11. Metal-processing caps and spacer rings positioned on replicas.



12. Metal-processing caps and spacers secured into the denture base with auto-polymerising acrylic resin.



13. Removal of the spacer rings to show the protective laboratory elements.



14. The protective laboratory element is removed from the metal caps using the Core Tool.



15. Metal-processing caps designed to securely and passively retain a resilient retention element.



16. The definitive resilient retention element picked-up by the Core Tool.



17. Insertion of the definitive resilient retention element with the Core Tool.



18. Completed denture with Locator attachments.