

# Education Program

A woman with long dark hair, wearing a blue cable-knit sweater and white cargo pants, stands on a balcony overlooking a large body of water. She is holding a small blue cup. The balcony has a dark metal railing with a decorative post. The background shows a calm lake, distant hills, and a clear sky. A large, light blue circular graphic element is positioned behind the woman and the title.

**International Training & Education 2010**  
Customized for dental professionals



# KNOWLEDGE IS THE ESSENCE OF EVOLUTION

The act of teaching and learning has continued for millions of years; layers of ancient knowledge and new discoveries have ultimately added up to the world we currently live in. But what if we suddenly stopped learning?

Our history is marked by advances in technology and the constant growth of knowledge, with no sign of decreasing. On the contrary, the pace of technological changes and the tidal wave of new information are actually increasing. Lifelong education is therefore a commitment to being professional, keeping up-to-date and continuously seeking to improve our knowledge and skills.



# A world of inspiration

Inspired by continuous learning, Astra Tech Dental offers a wide selection of courses in more than five hundred locations worldwide. Thanks to our long-term collaboration with clinical centers and universities all over the world, our courses reflect the most recent scientific information and technology. Irrespective of your previous implant experiences and skills, we are confident that you will find courses in this catalog and on our website that will match your individual interests and needs.

## Course levels



### Basic courses

For all members of the dental team with little or no knowledge of implant treatment.



### Intermediate courses

For all members of the dental team with basic knowledge of implant treatment (i.e. have participated in a basic course and gained some clinical experience).



### Advanced courses

For all members of the dental team who have participated in basic and intermediate courses and gained enough clinical knowledge and experience to learn more about advanced treatment protocols.

## Course categories

- IMPLANT SURGERY
- IMPLANT PROSTHETICS
- IMPLANT SURGERY & PROSTHETICS
- COMPUTER GUIDED IMPLANT TREATMENT
- LABORATORY TECHNIQUES
- SEMINAR/SYMPOSIUM

## Range of courses

The local and international education programs collectively offer a wide and deep selection of courses. Make sure to visit [www.astratechdental.com](http://www.astratechdental.com) regularly to check out all our available courses, since the program is continuously updated.

## Course completion

After the course you will receive a diploma signed by the main speakers. You may also contact your local market representative for CE Credits.

## Course registration

Register online ([www.astratechdental.com](http://www.astratechdental.com)) or fill in and fax the registration form available at the end of this catalog.

Are you new to Astra Tech Dental™? Get inspired and read all about the freedom of unlimited possibilities at [www.astratechdental.com](http://www.astratechdental.com)



# General overview

## Implant surgery

- 6 Implant surgery in difficult cases
- 7 Advanced surgical techniques in implantology
- 8 Advanced implant surgery with focus on different bone grafting procedures
- 9 Advanced implant surgery with focus on sinus lift and minor bone grafting procedures
- 10 Advanced implant surgery with focus on minor bone grafting procedures
- 11 Advanced implant surgery with focus on maxillary reconstruction with or without bone substitute

## Implant prosthetics

- 12 Contemporary implant prosthodontics

## Implant surgery & prosthetics

- 13 Implant overdenture therapy hands-on course
- 14 Implant therapy in the esthetic zone
- 15 Clinical and research observations on implants
- 16 Advanced implant restoration
- 17 Surgical and prosthetic options in implant dentistry
- 18 Advanced implant dentistry
- 19 Implant treatment in difficult cases

## Computer guided implant treatment

- 20 Facilitate™ software training
- 21 Computer guided implantology
- 22 Facilitate™ computer guided implant treatment

## Laboratory techniques

- 23 Abutment design
- 24 Unlimited restorative possibilities with Astra Tech Dental

## Seminar/symposium

- 25 Current concepts in implant dentistry – from science to clinical practice
- 26 Treatment planning – Ex-press your opinion
- 27 Treatment strategy and procedures for advanced levels

## General information

- 28 True inspiration for dental professionals
- 30 Registration information
- 31 Registration form
- 33 Summary 2010



# Implant surgery in difficult cases



If you are involved in implant surgery and have prior experience from implant rehabilitation, this is a course for you.

It is always a challenge to solve cases with limited bone volume and/or poor bone quality without bone grafting procedures. In this course, live surgery illustrating implant installation procedures is in focus. You will be able to assist and experience the advantage with Astra Tech implant design allowing a conventional surgical technique without bone grafts. Biomechanical aspects on implant positioning as well as risk factors in implant treatment are presented and discussed.

## When and where?

May 27-28, 2010

Dept. of Oral and Maxillofacial Surgery, Institute of Odontology, The Sahlgrenska Academy at the University of Gothenburg, Göteborg, Sweden

## Lecturers

**Lars Rasmusson**, DDS, PhD, Professor, Dept. of Oral and Maxillofacial Surgery, Institute of Odontology, The Sahlgrenska Academy at the University of Gothenburg, Sweden

**Mats Wallström**, DDS, Clinical Director, Dept. of Oral and Maxillofacial Surgery, Institute of Odontology, The Sahlgrenska Academy at the University of Gothenburg, Sweden

**Anders Örtorp**, DDS, PhD, Associate Professor, Specialist in Prosthodontics, Dept. of Prosthetic Dentistry/Dental Material Science, Institute of Odontology, The Sahlgrenska Academy at the University of Gothenburg, Sweden

## Course content

### Lectures

- Anatomical considerations in implant surgery
- One-stage vs. two-stage surgery
- Risk factors in implant treatment
- Biomechanical aspects of implant positioning

### Live surgery\*

(Implant surgical protocol avoiding bone grafting procedures)

- Implant surgery in the posterior maxilla
- Single tooth implant surgery with reduced bone volume
- Implant surgery in the posterior mandible
- Implant surgery in the thin maxilla

\*Subject to minor changes

Visit [www.astratechdental.com](http://www.astratechdental.com) for more information about our speakers and a detailed program!



**Target group:** Doctors  
**Duration:** 2 days  
**Participants:** Min. 7, max. 10  
**Course fee:** SEK 12,400 ex. VAT.  
Included in fee: Course material, diploma, coffee, lunches and one dinner  
**Language:** English  
**Code:** ISD 101

# Advanced surgical techniques in implantology



For doctors experienced in implant surgery who wish to extend their knowledge and skills into more advanced surgical procedures.

Through dissections on human cadavers you will learn to identify major anatomical structures. Guided by reflection and anatomical knowledge, the participants will learn how to perform advanced implant surgery and how to select cases suitable for different surgical techniques. Post operative handling of complications will be discussed. Advanced surgical techniques will be demonstrated and also performed by the participants on cadavers.

## When and where?

March 11-13, October 14-16, 2010

Faculty of Medicine, University of Paris, Paris, France

## Lecturers

**David Abensur**, DDS, Dept. of Oral Implantology, University of Corsica, France

**Pascal Valentini**, DDS, Dept. of Oral Implantology, University of Corsica, France and Private Implant Dentistry Practice, Paris, France

In cooperation with:



## Course content

### Lectures

- Single tooth replacement – New trends
- Immediate/slightly delayed/late implant placement after extraction
  - Indications
  - Surgical technique (Bone grafting)
- Results from clinical follow-up
- Partially and fully edentulous patients
- Maxillary sinus floor elevation
  - Indications
  - Surgical technique
  - Complications
  - Long-term results
  - Future developments

### Video demonstrations

- Dissection of the cheek in order to identify sensitive structures such as the facial artery, the facial vein, the buccal nerve, sub mental artery, etc.
- Immediate implant placement in extraction sites and immediate provisionalization in different types of defects (circumferential and buccal defects)
- Bone harvesting from the chin and the ramus area
- Dissection of mental nerve
- Onlay graft technique in the anterior maxilla
- Maxillary sinus grafting
- Dissection of lingual nerve

### Hands-on training on cadavers

- Immediate implant placement in extraction sites and immediate provisionalization in different types of defects (circumferential and buccal defects)
- Bone harvesting from the chin and the ramus area
- Onlay graft technique in the anterior maxilla
- Maxillary sinus grafting

Visit [www.astratehdental.com](http://www.astratehdental.com) for more information about our speakers and a detailed program!



<b>Target group:</b>	Doctors
<b>Duration:</b>	3 days
<b>Participants:</b>	Min. 20, max. 24
<b>Course fee:</b>	EUR 2,200
	Included in fee: Course material, diploma, coffee and lunches
<b>Language:</b>	English and/or Italian
<b>Code:</b>	March AST 101, Oct AST 102

# Advanced implant surgery

with focus on different bone grafting procedures



If you are surgically experienced, and involved in bone grafting procedures, this course will increase your knowledge of the various bone grafting techniques available today.

Surgical solutions in severely resorbed jaws and indications for different bone grafting procedures including distraction osteogenesis will be presented and discussed. The course includes lectures and live surgery with opportunities for the participants to assist.

## When and where?

**March 24-26, October 27-29, 2010**

Dept. of Oral and Maxillofacial Surgery, Center of Head and Orthopaedics, Copenhagen University Hospital, Rigshospitalet, Copenhagen, Denmark

## Lecturers

**Søren Hillerup**, DDS, Dr. Odont., PhD, Professor, Dept. of Oral and Maxillofacial Surgery, Rigshospitalet, University of Copenhagen, Denmark

**Thomas Kofod**, DDS, PhD, Consultant Oral and Maxillofacial Surgeon, Dept. of Oral and Maxillofacial Surgery, Rigshospitalet, University of Copenhagen, Denmark

**Ole Schwartz**, DDS, PhD, Clinical Director, Dept. of Oral and Maxillofacial Surgery, Centre of Head and Orthopaedics, Rigshospitalet, University of Copenhagen, Denmark

**Simon Storgaard Jensen**, DDS, Consultant Maxillofacial Surgeon, Glostrup Hospital, University of Copenhagen, Denmark

## Course content

### Lectures

- Bone regeneration – minor procedures
  - Indications, intraoral donor sites, bone grafting materials, bone growth factors, instruments and techniques
- Sinus augmentation
- Extra oral donor sites
  - Possibilities, surgical technique, morbidity, complications
- Major maxillary and mandibular alveolar reconstruction with free bone grafts
- Distraction osteogenesis
- Case presentations
- Results from clinical studies
  - Major maxillary and mandibular alveolar reconstruction with free bone grafts

### Live surgery\*

- Bilateral sinus augmentation and maxillary onlay grafting. Bone graft from iliac crest
- Osteodistraction in the anterior maxilla
- Lateral and vertical bone augmentation in the maxilla. Bone graft from the mandible
- Bilateral sinus grafting. Bone graft from the mandible

\*Subject to minor changes

Visit [www.astratechdental.com](http://www.astratechdental.com) for more information about our speakers and a detailed program!



<b>Target group:</b>	Doctors
<b>Duration:</b>	3 days
<b>Participants:</b>	Max. 7
<b>Course fee:</b>	SEK 16,400 ex. VAT. Included in fee: Course material, diploma, coffee, lunches and one dinner
<b>Language:</b>	English
<b>Code:</b>	March AIS 101, Oct AIS 103



## ■ IMPLANT SURGERY

# Advanced implant surgery

with focus on sinus lift and minor bone grafting procedures



This course is an excellent choice if you have experience in conventional implant surgery and an interest in advanced surgical techniques.

Sinus lift and onlay bone grafting procedures are the main focuses. Lecturers and live surgery, with the opportunity to assist, will illustrate the different techniques available to enhance the bone volume. Implant installations in bone-grafted cases will also be demonstrated. Clinical and experimental studies on various bone grafting procedures will be presented and discussed.

## When and where?

**October 14-15, 2010**

Dept. of Oral and Maxillofacial Surgery, Institute of Odontology, The Sahlgrenska Academy at the University of Gothenburg, Göteborg, Sweden

## Lecturers

**Göran Kjeller**, DDS, PhD, Associate Professor, Dept. of Oral and Maxillofacial Surgery, Institute of Odontology, The Sahlgrenska Academy at the University of Gothenburg, Sweden

**Lars Rasmusson**, DDS, PhD, Professor, Dept. of Oral and Maxillofacial Surgery, Institute of Odontology, The Sahlgrenska Academy at the University of Gothenburg, Sweden

**Mats Wallström**, DDS, Clinical Director, Dept. of Oral and Maxillofacial Surgery, Institute of Odontology, The Sahlgrenska Academy at the University of Gothenburg, Sweden

## Course content

### Lectures

- Anatomy and patient selection
- Surgical considerations
  - Indications
  - Different surgical techniques
  - Donor and recipient sites
- Clinical and experimental studies on different bone grafting procedures

### Live surgery\*

- Sinus lifting cases
- Implant surgery in bone-grafted cases
- Minor onlay grafting cases

\*Subject to minor changes

Visit [www.astratehdental.com](http://www.astratehdental.com) for more information about our speakers and a detailed program!



<b>Target group:</b>	Doctors
<b>Duration:</b>	2 days
<b>Participants:</b>	Min. 7, max. 10
<b>Course fee:</b>	SEK 12,500 ex. VAT. Included in fee: Course material, diploma, coffee, lunches and one dinner
<b>Language:</b>	English
<b>Code:</b>	AIS 102

# Advanced implant surgery

with focus on minor bone grafting procedures



This 2-day course is perfect if you have experience in conventional implant surgery and an interest in advanced surgical techniques.

Various pre-implant surgical techniques suitable for general dentistry will be discussed and performed. The course includes local bone grafting, such as sinus lifting and onlay grafting, as well as distraction osteogenesis and implant installation in grafted bone. Lectures and live surgery will illustrate the different procedures.

## When and where?

**November 4-5, 2010**

Isaksson & Becktor, Clinic of Oral Surgery & Orthodontics, Hellerup, Copenhagen, Denmark

## Lecturers

**Jonas Peter Becktor**, DDS, PhD, Clinic of Oral Surgery and Orthodontics, Hellerup, Copenhagen, Denmark and Consultant, Maxillofacial Unit, Halmstad Hospital, Sweden

**Sten Isaksson**, DDS, MD, PhD, Clinical Director, Maxillofacial Unit, Halmstad Hospital, Sweden

## Course content

### Lectures

- Various bone grafting techniques suitable for local anesthetics
- Case presentations
- Various bone grafting techniques suitable for general anesthetics
- Treatment planning and discussion of participants' cases
- Indications and complications
- Research and studies on implants and bone grafts

### Live surgery\*

- Titanium mesh and bone graft
- Bilateral sinus inlay bone graft
- Onlay bone graft for single tooth implants
- Implant surgery in grafted bone

\*Subject to minor changes

Visit [www.astratechdental.com](http://www.astratechdental.com) for more information about our speakers and a detailed program!



**Target group:** Doctors  
**Duration:** 2 days  
**Participants:** Min. 4, max. 5  
**Course fee:** SEK 15,100 ex. VAT.  
Included in fee: Course material, diploma, coffee, lunches and one dinner  
**Language:** English  
**Code:** AIS 104

# Advanced implant surgery

with focus on maxillary reconstruction with or without bone substitute



If you are surgically experienced and involved in implant treatment, this is a course for you.

It presents different surgical solutions for the severely resorbed maxilla, focusing on reconstruction with or without bone substitute. Various donor sites will be illustrated and discussed. Lectures and live surgery with the opportunity for the participants to assist are the primary focus of the course. Results from clinical studies will be presented.

## When and where?

**November 10-12, 2010**

Dept. of Oral and Maxillofacial Surgery, Gävle County Hospital, Gävle, Sweden

## Lecturers

**Hartmut Feldmann**, DDS, Consultant, Oral and Maxillofacial Surgeon, Director Maxillofacial Unit, Gävle County Hospital, Sweden

**Mats Hallman**, DDS, PhD, Consultant, Oral and Maxillofacial Surgeon, Dept. of Oral and Maxillofacial Surgery, Gävle County Hospital, Sweden

**Arne Mordenfeld**, DDS, Consultant, Oral and Maxillofacial Surgeon, Dept. of Oral and Maxillofacial Surgery, Gävle County Hospital, Sweden

**Tomas Strandkvist**, DDS, Consultant, Oral and Maxillofacial Surgeon, Dept. of Oral and Maxillofacial Surgery, Gävle County Hospital, Sweden

## Course content

### Lectures

- Biology and anatomy
- Surgical considerations
  - Indications/contraindications
  - Techniques
  - Donor and recipient sites
  - Complications
- Bone substitutes

### Live surgery\*

- Bone augmentation in the esthetic zone
- Bilateral sinus floor augmentation with Bio-Oss®
- Sinus floor augmentation with bone graft from the mandibular ramus and simultaneous implant installation
- Sinus floor augmentation with Bio-Oss® and simultaneous implant installation
- Buccal local onlay grafting with bone block from the mandibular ramus
- Bilateral implant installation in the maxilla with simultaneous sinus floor augmentation

\*Subject to minor changes

Visit [www.astratehdental.com](http://www.astratehdental.com) for more information about our speakers and a detailed program!



<b>Target group:</b>	Doctors
<b>Duration:</b>	3 days
<b>Participants:</b>	Min. 5, max. 6
<b>Course fee:</b>	SEK 13,900 ex. VAT. Included in fee: Course material, diploma, coffee, lunches and one dinner
<b>Language:</b>	English
<b>Code:</b>	AIS 105



# Contemporary implant prosthodontics



This course is ideal for those of you who already have experience in implant rehabilitation.

Implant retained prosthodontics have many features in common with tooth retained restorations, but there are also a number of differences. The importance of taking these differences into consideration in order to avoid unnecessary failures will be highlighted.

The course will cover basic mechanical and biological principles. Treatment planning from a biological, technical and financial point of view will be discussed. Procedures enhancing the clinical success in complex cases, including cosmetic possibilities and limitations with implant treatment, will be illustrated through case presentations. Versatile techniques for immediate/early loading of implants as well as the advantages of patient-specific Atlantis™ abutments and the Cresco™ system will be demonstrated.

## When and where?

**May 6-7, 2010**

Astra Tech Conference Center for  
Training & Education, Mölndal, Sweden

## Lecturers

**Per Daneskog**, CDT, Master Dental Technician, Trident Dental, Kalmar, Sweden

**Stefan Ellner**, DDS, Senior Consultant, Clinic for Prosthodontics, Specialist Dental Care Center, Kalmar County Hospital, Kalmar, Sweden

**Robert Fermgård**, DDS, Head, Dept. of Oral Surgery, Specialist Dental Care Center, Västervik, Sweden

**Gunnar Bagge**, CDT, International Product Manager, Astra Tech AB, Mölndal, Sweden

## Course content

### Lectures

- Basic biology and different treatment protocols
- Optimal implant positioning
- Advanced pre-prosthetic surgical techniques
- Mechanical and biomechanical considerations on material and design
- “Esthetic” vs. “functional” prosthetic material
- Cresco™ – for precise fit
  - How and why?
- Cresco™
  - Case presentation
- Atlantis™ abutments – as individual as your patients
- Case presentation – Atlantis™ abutments
- Tooth to implant connected suprastructures
- Case presentation – DesignLine™ abutments and Direct Abutment™ system
- Early loading – advantages and risks of complications
- Clinical and radiographic follow-up routines

### Demonstration

- Cresco™ precision technique
- Tour of Atlantis™ production

### Workshop

- Treatment planning on complex cases

Visit [www.astratechdental.com](http://www.astratechdental.com) for more information about our speakers and a detailed program!



<b>Target group:</b>	Doctors
<b>Duration:</b>	2 days
<b>Participants:</b>	Min. 10, max. 20
<b>Course fee:</b>	SEK 11,200 ex. VAT Included in fee: Course material, diploma, coffee, lunches and one dinner
<b>Language:</b>	English
<b>Code:</b>	CIP 101

# Implant overdenture therapy hands-on course



Implant overdenture therapy is becoming a commonly accepted method of providing tooth replacement therapy for the edentulous mandible.

This simulation hands-on course will provide in-depth practical information that will include treatment planning, indications and contraindications to implant therapy, surgical implant placement, loading protocols followed by clinical and laboratory steps needed to reline and/or the intraoral refitting of existing dentures with overdenture attachments. There will also be a discussion and demonstration on the use of implant supported bar-overdentures including implant retained and implant supported overdentures in the maxilla as well as use of implants for retention of removable partial dentures. The indications, complications and maintenance issues with each approach will be discussed.

## When and where?

**February 13, 2010**

The University of Iowa College of Dentistry, Iowa City, USA

## Lecturers

**Steve Clark**, DDS, Clinical Associate Professor, Dept. of Periodontics, University of Iowa College of Dentistry, Iowa, USA

**Emad Estafanous**, BDS, MSD, Assistant Professor, Dept. of Prosthodontics, University of Iowa College of Dentistry, Iowa, USA

**David Gratton**, DDS, MS, Assistant Professor, Dept. of Prosthodontics, University of Iowa College of Dentistry, Iowa, USA

**Clark Stanford**, DDS, PhD, Centennial Fund Professor in the Dows Institute for Dental Research, Dept. of Prosthodontics, University of Iowa College of Dentistry, Iowa, USA

**Christopher Barwacz**, DDS, Visiting Instructor, Dental Clinical Research Center, University of Iowa College of Dentistry, Iowa, USA

**Charlie Ringgold**, BS, DDS, Clinical Professor, Dept. of Oral and Maxillofacial Surgery, University of Iowa College of Dentistry, Iowa, USA

**Residents** in the post-graduate program in Oral and Maxillofacial Surgery, Periodontics and Prosthodontics

## Course content

### Lectures

- Recognize the medical, dental and anatomic issues that must be addressed in treatment planning of mandibular and maxilla implant overdenture therapy.
- Understand the impact of implant placement on the selection, duration of healing, restoration and durability of implant overdenture attachment systems.
- Identify the clinical and laboratory steps involved in implant overdenture relining procedures.
- Identify the clinical and laboratory steps involved in retrofitting existing complete dentures to anterior mandibular implants.
- Understand the application of implant attachments for retention of removable partial dentures.

For more information visit [www.astratechdental.com](http://www.astratechdental.com)  
For registration info, go to: [www.dentistry.uiowa.edu/ce](http://www.dentistry.uiowa.edu/ce)  
or call +1 319-335-7166



<b>Target group:</b>	Doctors
<b>Duration:</b>	1 day
<b>Participants:</b>	Max. 25
<b>Course fee:</b>	USD 415
<b>Language:</b>	English
<b>Code:</b>	AT 1002

# Implant therapy in the esthetic zone



The anterior maxilla is often referred to as the “esthetic zone.” Tooth replacement in the esthetic zone presents unique challenges for the clinician. However, achievement of optimal esthetics in this area can be most rewarding.

The prerequisites for achieving a successful esthetic outcome in this region include: 1) knowledge of the biology of the implant-prosthesis-tissue interface and its post-treatment alterations, 2) careful preoperative treatment planning, 3) augmentation of hard and soft tissues when deficiencies exist and 4) attention to detail in the execution of surgical and prosthetic techniques. This course will review the biological fundamentals, as well as the clinical surgical and restorative techniques involved.

## When and where?

**March 12-14, 2010**

University of Southern California, Los Angeles, California, USA

## Lecturers

**Domenico Cascione**, CDT, Research Associate at the Center of Dental Technology, the University of Southern California School of Dentistry, California, USA

**Lyndon Cooper**, DDS, PhD, Stallings Distinguished Professor of Dentistry, Dept. of Prosthodontics, University of North Carolina, USA

**Ramin Mahallatti**, DDS, Private Practice, California,

**Homa Zadeh**, DDS, PhD, Associate Professor and Chair, Dept. of Periodontics, University of Southern California School of Dentistry, USA

For more information, visit [www.astratehdental.com](http://www.astratehdental.com) or contact the USC CE Department at 213-821-2127 or visit [www.uscdentalce.org](http://www.uscdentalce.org)

## Course content

### Lectures

- Biology of implant-prosthesis-tissue interface
- Factors affecting the stability of the peri-implant tissues
- Treatment planning case selection:
  - Surgical and prosthetic considerations
- Diagnostic tools: CT imaging, surgical guide
- Computer-assisted implant positioning
- The applications of microscope in implant surgery
- Influence of implant component design on esthetic outcome
- Selection and sequencing of implant site-development techniques
- Orthodontic therapy for site development
- Soft tissue augmentation around implants
- Papilla preservation and regeneration around implants
- Minimally invasive tooth extraction
- Ridge preservation and augmentation
- Immediate implant placement vs. staged implant placement
- Immediate vs. delayed implant loading
- Implant impression technique and abutment selection
- Provisional placement: immediate vs. staged
- Laboratory techniques and procedures

### Hands-on workshop

- Minimally invasive tooth extraction
- Socket preservation techniques
- Implant placement into extraction socket
- Impression techniques
- Abutment modification and provisional fabrication

### Live surgery demonstration

- Minimally invasive tooth extraction
- Implant placement into extraction socket
- Implant-level impression
- Abutment modification and provisional fabrication

<b>Target group:</b>	Doctors
<b>Duration:</b>	3 days
<b>Participants:</b>	Max. 40
<b>Course fee:</b>	Before February 1, 2010: USD 1,795 After February 1, 2010: USD 1,995
<b>Language:</b>	English
<b>Code:</b>	AT 1006





# Clinical and research observations on implants



An excellent course if you have some experience in dental implant treatment.

This course focuses on the scientific update on the most recent research observations on implants. Some important and interesting topics will be in focus: immediate implant placement with different loading protocols as well as maintenance for long term success. Peri-implant disease will be discussed as well as the importance of a correct supportive therapy. The course includes lectures and live surgeries related to the topics being discussed.

The course will have simultaneous translation into Italian.

## When and where?

**June 3-4, 2010**

Franci Training and Education Center, Via Guizza, Padova, Italy

Supported by the Clinic of Prof. Jan Lindhe and Dr. Denis Cecchinato, Padova, Italy

## Lecturers

**Jan Lindhe**, DDS, PhD, Professor, Dept. of Periodontology, Institute of Odontology, The Sahlgrenska Academy at the University of Gothenburg, Sweden

**Denis Cecchinato**, DDS, Odont. Dr., MD, Past President of the Italian Society of Osseointegration, Padova, Italy

## Course content

### Lectures

Immediate implant procedures

- Immediate implant placement
- Functional- vs. non functional loading
- Immediate loading
- Excessive loading

Maintenance for long-term success

- Peri-implant disease
  - Etiology, diagnosis
  - Peri-implant mucositis
  - Peri-implantitis
- Supportive therapy
- Risk patient maintenance

### Live surgery

- Patient demonstrations related to the topics discussed

Visit [www.astratehdental.com](http://www.astratehdental.com) for more information about our speakers and a detailed program!



<b>Target group:</b>	Doctors
<b>Duration:</b>	2 days
<b>Participants:</b>	Min. 20, max. 40
<b>Course fee:</b>	EUR 900 ex. VAT. Included in fee: Course material, diploma, coffee and lunches
<b>Language:</b>	English
<b>Code:</b>	CRO 101

# Advanced implant restoration



A variety of clinical scenarios may present themselves, requiring complex prosthetic restoration. A key to success is careful planning and simplification of therapy, based on sound principles. A wide array of restorative options is available today. Selection of the appropriate prosthesis requires consideration of the patient anatomy, quantity and quality of available hard and soft tissues, the need for augmentation surgery, esthetic requirements, occlusal scheme and patient's desires.

The objective of this course is to review the fundamentals for prosthetic restoration of implant patients. An evidence-base approach will be used to provide treatment options with a high degree of predictability. Practical solutions to common prosthetic problems will be provided.

## When and where?

**June 11-13, 2010**

University of Southern California School of Dentistry,  
Los Angeles, California, USA

## Lecturers

**Domenico Cascione**, CDT, Research Associate at the Center of Dental Technology, the University of Southern California School of Dentistry, California, USA

**Fereidoun Daftary**, DDS, MSCD, Private Practice, California, USA

**Fernando Rojas-Vizcaya**, DDS, MS, Founder of the Mediterranean Prosthodontics Institute in Castellon, Spain, Adjunct Assistant Professor, Department of Prosthodontics, University of North Carolina at Chapel Hill, North Carolina, USA

**Homa Zadeh**, DDS, PhD, Associate Professor and Chair, Dept. of Periodontics, University of Southern California School of Dentistry, California, USA

For more information, visit [www.stratechdental.com](http://www.stratechdental.com) or contact the USC CE Department at +1-213-821-2127 or visit [www.uscdentalce.org](http://www.uscdentalce.org)

## Course content

- Prosthetic options for complex cases
- Treatment of fully-edentulous maxilla and mandible
- Treatment of compromised dentition requiring full-arch extraction
- Decision-tree for selection of fixed versus removable restoration
- Immediate and early loading
- Diagnostic tools: CT imaging, surgical guides
- Computer-assisted planning and implant positioning
- Immediate implant placement vs. staged implant placement
- Assessment of need and sequencing of implant site development techniques
- Implant impression techniques
- Screw-retained vs. cement-retained restorations
- Application of CAD/CAM in abutment and restoration fabrication
- Abutment selection guidelines
- Occlusal considerations and guidelines
- Provisional options and techniques
- Prosthetic complications and their management
- Dental materials used in implant restoration
- Laboratory techniques and procedures

### Hands-on workshop

- Implant impression techniques
- Provisional fabrication for multiple-unit restoration
- Abutment modification

### Live surgery demonstration

- Implant impression techniques
- Provisional fabrication for multiple-unit restoration
- Abutment modification

<b>Target group:</b>	The dental team
<b>Duration:</b>	3 days
<b>Participants:</b>	Max. 40
<b>Course fee:</b>	Before May 1: USD 1,795 After May 1: USD 1,995
<b>Language:</b>	English
<b>Code:</b>	AT 1011



# Surgical and prosthetic options in implant dentistry



This course is suitable for professionals with some experience in implantology who would like to extend their knowledge and skills into more advanced implant treatment protocols and procedures. Different surgical techniques, from standard protocols and immediate implant placement to advanced implant surgery will be presented and discussed.

A combination of lectures, live surgeries and clinical demonstration on immediate temporization makes this course attractive and dynamic.

## When and where?

**September 16-17, 2010**

I-med Clinic for Dental Implantology and Esthetic Surgery, Zagreb, Croatia

## Lecturers

**Damir Jelušić**, DDS, Periodontist, Private Clinic for Periodontology, Dental Implantology and Esthetic Dentistry, Opatija, Croatia

**Marko Krmpotić**, DDS, MSc, Oral Surgeon, I-med Clinic for Dental Implantology and Esthetic Surgery, Zagreb, Croatia

Visit [www.astratechdental.com](http://www.astratechdental.com) for more information about our speakers and a detailed program!

## Course content

### Lectures

- Surgical principles
  - One- and two-stage surgery
  - Immediate and delayed implant placement
  - Immediate and early loading
- Biology and anatomy of edentulous jaws and maxillary sinus
- Surgical techniques in posterior maxilla
  - Osteotome technique
  - Sinus lift procedure
- Computer guided surgery with Facilitate™
  - Demonstration of Facilitate software
  - 3D visualization with Facilitate
  - Computer planning with Facilitate
- Analysis of edentulous patients and appropriate treatment selection
  - Surgical considerations
  - Prosthetic concepts

### Live surgery\*

- Immediate implant placement and immediate temporization
- Implant installation in posterior maxilla
- Osteotome technique
- Implant placement in atrophic lower jaw

\* Subject to minor changes



<b>Target group:</b>	Doctors
<b>Duration:</b>	2 days
<b>Participants:</b>	Min. 7, max. 10
<b>Course fee:</b>	SEK 11,200 ex. VAT Included in fee: Course material, diploma, coffee, lunches and one dinner
<b>Language:</b>	English
<b>Code:</b>	SPO 101



# Advanced implant dentistry



This comprehensive course will give you detailed knowledge of current clinical concepts and research data. Patient assessment and treatment strategies for advanced cases are presented. Lectures and live demonstrations will illustrate ridge preservation techniques, implant selection and placement as well as subsequent healing times and prosthetic protocols, all with special focus on esthetics. Bone and soft tissue regenerative procedures will be discussed in an evidence-based approach. Guidelines for the choice of restorative materials including fabrication of CAD/CAM reconstructions will be provided.

## When and where?

**September 30-October 2, 2010**

Clinic for Fixed and Removable Prosthodontics and Dental Material Science, Dental School, University of Zurich, Zurich, Switzerland

## Lecturers

**Christoph H.F. Hämmerle**, Prof. Dr. med. dent., Chairman, Clinic for Fixed and Removable Prosthodontics and Dental Material Science, Center for Dental and Oral Medicine and Cranio-Maxillofacial Surgery, University of Zurich, Switzerland

**Ronald E. Jung**, PD Dr. med. dent., Associate Professor and Vice Chairman, Clinic for Fixed and Removable Prosthodontics and Dental Material Science, Center for Dental and Oral Medicine and Cranio-Maxillofacial Surgery, University of Zurich, Switzerland

**Irena Sailer**, Dr. med. dent., Assistant Professor, Clinic for Fixed and Removable Prosthodontics and Dental Material Science, Center for Dental and Oral Medicine and Cranio-Maxillofacial Surgery, University of Zurich, Switzerland

**David Schneider**, Dr. med. med. dent., Assistant Professor, Clinic for Fixed and Removable Prosthodontics and Dental Material Science, Center for Dental and Oral Medicine and Cranio-Maxillofacial Surgery, University of Zurich, Switzerland

**Mutlu Özcan**, Prof. (NL), Dr. med. dent., PhD, Clinic for Fixed and Removable Prosthodontics and Dental Material Science, Center for Dental and Oral Medicine and Cranio-Maxillofacial Surgery, University of Zurich, Switzerland

**Daniel S. Thoma**, Dr. med. dent., Assistant Professor, Clinic for Fixed and Removable Prosthodontics and Dental Material Science, Center for Dental and Oral Medicine and Cranio-Maxillofacial Surgery, University of Zurich, Switzerland

## Course content

### Lectures

- Contemporary implant dentistry: state research and clinics
- Initial patient assessment: a key for proper risk management
- Treatment strategy in advanced and complex cases
- Tissue integration: what are the critical issues today
- Ridge preservation: emerging concepts and techniques
- Timing for implant placement into extraction sockets
- Computer assisted implant surgery/reconstruction
- Decision tree and clinical procedures for success with GBR
- Immediate implant placement: practical and theoretical issues
- Appropriate healing times in various clinical situations, re-entry procedures
- Choice of ceramic or metal abutments in esthetic and non-esthetic sites
- Immediate, early or conventional loading protocols
- Ceramic, metal, composites: election of reconstructive material
- Crown fabrication: CAD/CAM or conventional technology
- Fixation of reconstruction: cement, screw, meso-structure
- Long-term outcomes: what to expect from the future
- Case discussions

### Live demonstrations

- Anterior implant placement: the esthetic challenge
- Abutment fabrication by digital means
- Soft tissue conditioning: novel approaches
- Fixation of a crown

### Hands-on training

- Implant placement in esthetic indications (plastic model)
- Implant placement with GBR (pig jaw extraction site model)

Visit [www.astratehdental.com](http://www.astratehdental.com) for more information about our speakers and a detailed program!



<b>Target group:</b>	Doctors
<b>Duration:</b>	3 days
<b>Participants:</b>	Min. 20, max. 35
<b>Course fee:</b>	CHF 3,600 Included in fee: Course material, diploma, coffee, lunches and one dinner.
<b>Language:</b>	English
<b>Code:</b>	AID 101

# Implant treatment in difficult cases



This is a two-day course suited for anyone who has experience in implant dentistry but who wishes to extend his or her experience into more complex clinical cases.

Various surgical techniques will be illustrated through lectures and hands-on workshops on animal jaws. The prosthetic restoration, as well as soft tissue considerations related to the complex case, will be presented and discussed. Furthermore, you may bring one of your own complex clinical cases to the treatment planning workshop.

## When and where?

**December 6-7, 2010**

LonDEC, King's College London, London, United Kingdom

## Lecturers

**Leslie Howe**, BDS, FDS, RCS, Head of Conservative Dentistry, King's College Dental Institute, Guy's Hospital, London, United Kingdom

**Paul Palmer**, BDS, MRD, RCS, Consultant in Implant Surgery and Specialist in Periodontics, Dept. of Periodontology, King's College Dental Institute, Guy's Hospital, London, United Kingdom

**Richard Palmer**, BDS, FDS, RCS, PhD, Professor of Implant Dentistry and Periodontology, Dept. of Periodontology, King's College London Dental Institute, Guy's Hospital, London, United Kingdom

## Course content

### Lectures

- Introduction and risk factors
- Treatment planning presentations
- Treatment planning of cases – workshop
- Presentations of cases and discussion
- Restoring complex cases
  - Customized abutments
  - Ceramic abutments
  - Tooth/implant reconstructions
  - Soft tissue control through prosthodontics
- Treatment planning and discussion
- Surgical techniques 1
  - Peri-implant soft tissues
  - Immediate extraction and installation
  - Early and immediate loading
- Surgical techniques 2
  - Bone augmentation
  - Soft tissue augmentation
  - Surgical complications

### Hands-on training on animal jaws

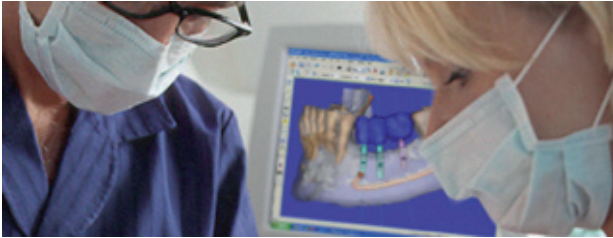
- Implant site development in soft bone surgery
- Immediate implant installation
- Osteotome technique
- Soft tissue surgery

Visit [www.astratechdental.com](http://www.astratechdental.com) for more information about our speakers and a detailed program!



<b>Target group:</b>	Doctors
<b>Duration:</b>	2 days
<b>Participants:</b>	Min. 7, max. 8
<b>Course fee:</b>	SEK 13,400 ex. VAT. Included in fee: Course material, diploma, coffee, lunches and one dinner
<b>Language:</b>	English
<b>Code:</b>	ITD 101

# Facilitate™ software training



In a one-day course, participants will get an introductory overview of the complete procedure from patient diagnosis to guided surgery.

The training program will focus on treatment planning with Facilitate™ Software: participants will be trained to use the software in a very practical, hands-on way. Participants will be requested to bring their laptops on which the Facilitate™ software will be installed.

This training should ideally be followed by a two-day course.

## When and where?

**April 16, November 26, 2010**

Materialise Dental NV, Leuven, Belgium

## Lecturers

**Jury Eggharter**, Consultant, SimPlant Platform, Materialise, Belgium

**Tomas Saltvik**, DDS, International Product Manager, Astra Tech AB, Mölndal, Sweden

## Course content

### Lectures

- The Facilitate™ concept
- The importance of the scanning appliance
- The software functions
  - Functionality of the task panel
  - The zoom functions
  - Implant placement with Facilitate™: different possibilities
  - Adjustments to an implant (length, width, rotation, specification of implant brand)
  - Interpretation of bone density indicated in Hounsfield units
  - 3D imaging and its features (highlighting, manipulation of the 3D images, etc.)
  - Virtual teeth
  - Dr. James
- Transfer to surgery
  - Facilitate™ Guide preview
  - Online ordering of the drill guide through the Facilitate™ Software

### Hands-on

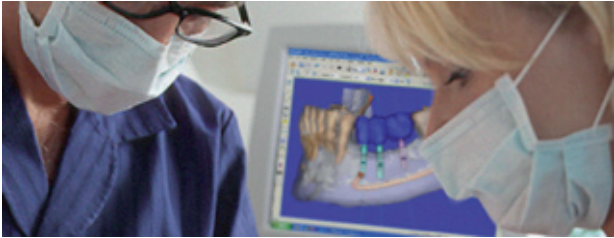
- Workshop
  - Facilitate software training

Visit [www.astratechdental.com](http://www.astratechdental.com) for more information about our speakers and a detailed program!



**Target group:** Doctors  
**Duration:** 1 day  
**Participants:** Min. 7, max. 15  
**Course fee:** EUR 295 ex. VAT.  
Included in fee: Course material, diploma, coffee and lunch  
**Language:** English  
**Code:** April CGT 101, Nov CGT 102

# Computer guided implantology



A course for the clinicians who would like to gain more knowledge of computer guided surgery for immediate load implant therapy, in addition to those wanting to learn both simple and complex treatment planning for all edentulous case types using guided surgery.

During this course, participants will be given an overview of the complete procedure from patient diagnosis to guided surgery. The course faculty will focus on computer guided surgery for immediate load implant therapy and numerous cases will be demonstrated or discussed. Various techniques will be illustrated through lectures and limited hands-on demonstrations.

## When and where?

**March 25-27, 2010**

PerioHealth Center for Excellence, Houston, Texas, USA

## Lecturers

**David Guichet**, DDS, Private Practice, Orange, California, USA

**Ron Hickerson**, DDS, Private Practice, Houston, Texas, USA

**Michael McGuire**, DDS, Clinical Assistant Professor, Dept. of Periodontics, University of Texas Dental Branch, Houston, Private Practice, Texas, USA

**E. Todd Scheyer**, DDS, MS, Clinical Assistant Instructor, Dept. of Endodontics and Periodontics, University of Texas Dental Branch, Houston, Private Practice, Texas, USA

## Course content

- Basic treatment pathways, including diagnostics and the following case types:
  - Single tooth restorations
  - Partial edentulous (multi-tooth fixed)
  - Edentulous mandible (full arch fixed, removable)
  - Edentulous maxilla (full arch fixed, removable)
  - Implant overdenture and implant supported removable prostheses
- The latest software tools: realistic implants, virtual teeth, measurements, localization of vital structures, collision detection, bone quality and many others.
- Surgical guide types and how to design the right guide for your patient.
- Provisional set-up and delivery for full arch cases—what are your options?

### Optional software training

- Participants will also have the opportunity to attend an optional software training session being held the evening before the course starts. Some software usage will be covered during the course, however first time users and participants interested in extensive hands-on software training should attend this optional course.

For more information, visit [www.astratechdental.com](http://www.astratechdental.com) or contact Cindy at PerioHealth Center for Excellence, phone: +1 713-783-5442, email: [info@periohealth.com](mailto:info@periohealth.com)



<b>Target group:</b>	The dental team
<b>Duration:</b>	3 days
<b>Participants:</b>	Max. 30
<b>Course fee:</b>	Thursday evening: USD 250 (software training - optional) Friday and Saturday: USD 1,990 (lectures, live surgery and prosthetics)
<b>Language:</b>	English
<b>Code:</b>	AT 1007



## ■ COMPUTER GUIDED IMPLANT TREATMENT

# Facilitate™ computer guided implant treatment



This course is ideal when you have some experience in implant treatment and want to increase and deepen your knowledge and understanding of computer guided implant treatment.

By integrating this concept into your practice, you will reach a new level of predictability, accuracy and efficiency. Furthermore, computer guided implant treatment optimizes safety for you and your patients, reduces time for the implant procedure and enhances patient satisfaction.

Participants are advised to bring their laptop computers on which the Facilitate™ Software will be installed.

## When and where?

**November 29-30, 2010**

Astra Tech Conference Center for  
Training & Education, Mölndal, Sweden

## Lecturers

**Michael Norton**, BDS, FDS, RCS (Ed), Specialist in Oral Surgery, Centre of Implant and Restorative Dentistry, London, UK.

**Lars Rasmusson**, DDS, PhD, Professor, Dept. of Oral and Maxillofacial Surgery, Institute of Odontology, The Sahlgrenska Academy at the University of Gothenburg, Sweden

**Tomas Saltvik**, DDS, International Product Manager, Astra Tech AB, Mölndal, Sweden

## Course content

### Lectures

- Integrating computer guided implant treatment into your practice
- How to work with Facilitate™ in your practice
- Treatment planning from raw scan to Facilitate™ guide
- Diagnostic procedures, CT scan requirements
- The scan prosthesis
- The art and science of decision making
- Minimally invasive implant placement and immediate loading
- The temporary construction
- Virtual planning of the hands-on case by participants

### Hands-on training

- Virtual planning of cases
- Hands-on drilling session

### Live surgery demonstration

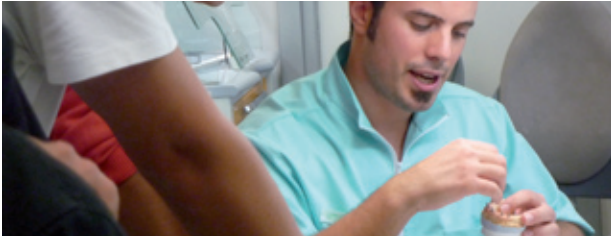
- Implant installation with Facilitate™ surgical guide

Visit [www.astratechdental.com](http://www.astratechdental.com) for more information about our speakers and a detailed program!



<b>Target group:</b>	Doctors
<b>Duration:</b>	2 days
<b>Participants:</b>	Min. 8, max. 12
<b>Course fee:</b>	SEK 12,500 ex. VAT. Included in fee: Course material, diploma, coffee, lunches and one dinner
<b>Language:</b>	English
<b>Code:</b>	CGT 103

# Abutment design



A course suitable for the dental technician with some experience from dental implant restorations.

This course will give knowledge on how to deal with challenging soft tissue situations, gingival esthetics and the actual abutment design. Important considerations for an esthetic implant treatment outcome are in focus.

The course includes both theory and practical work in the laboratory. Working with Atlantis™ is a beneficial procedure for the dental technician. There is no need for a scanner or wax up of the abutment. An Atlantis WebOrder is simply placed and sent together with the model to the Atlantis production facility. A high quality, patient specific abutment is delivered back to the laboratory.

## When and where?

**June 18, 2010**

Astra Tech Conference Center for  
Training & Education, Mölndal, Sweden

## Lecturer

**Ole Petter Våge**, CDT, Dental Technician Laboratory AS, Stavanger, Norway

## Course content

### Lectures

- Case presentations of laboratory procedures
- Design of a gingival mask on the plaster model
- Anatomical design on the subgingival level

### Hands-on training

- Subgingival design for special cases
- Abutment design
- Atlantis™ WebOrder

Visit [www.astratechdental.com](http://www.astratechdental.com) for more information about our speakers and a detailed program!



<b>Target group:</b>	Dental technicians
<b>Duration:</b>	1 day
<b>Participants:</b>	Max. 12
<b>Course fee:</b>	SEK 3,600 ex. VAT. Included in fee: Course material, diploma, coffee and lunch
<b>Language:</b>	English
<b>Code:</b>	ABD 010

# Unlimited restorative possibilities with Astra Tech Dental



This course is suitable for the dental technician with laboratory experience in the field of implant-supported restorations.

The course will give the participant the knowledge needed for working restoratively with the Astra Tech implant system. The focus is on Atlantis™, the best solution for cement-retained restorations as well as the Cresco™ system, the first choice for screw-retained restorations.

Through practical workshops with the Atlantis WebOrder program the participants will experience the procedure from ordering to the finished Atlantis abutment. The DesignLine™ abutments and the Direct Abutment™ system for cement-retained restorations will also be presented. The advantages of the Cresco system will be demonstrated through hands-on training and demonstrations.

## When and where?

**November 4-5, 2010**

Astra Tech Conference Center for Training & Education, Mölndal, Sweden

## Lecturers

**Gunnar Bagge**, CDT, International Product Manager, Astra Tech AB, Mölndal, Sweden

**Per Daneskog**, CDT, Master Dental Technician, Trident, Kalmar, Sweden

**Christian Erneklint**, CDT, International Product Manager, Astra Tech AB, Mölndal, Sweden

## Course content

### Lectures

- Introduction to Astra Tech Dental
- Presentation of Atlantis™ including the Atlantis™ WebOrder quick start & design guide
- Design Line™ Abutments
- Direct Abutment™ system
- Cresco™ system
- Overdentures
- Case presentation of Atlantis™ and Cresco™

### Hands-on training

- Atlantis WebOrder
- Placing orders to Atlantis production
- Review of produced Atlantis cases
- Cresco Design laboratory training
  - Bending wax-tube
  - Cresco Insert
  - Removal tool

### Demonstration

- Cresco™ precision technique
- Tour of Atlantis production

Visit [www.astratechdental.com](http://www.astratechdental.com) for more information about our speakers and a detailed program!



<b>Target group:</b>	Dental technicians
<b>Duration:</b>	2 days
<b>Participants:</b>	Max. 12
<b>Course fee:</b>	SEK 4,900 ex. VAT. Included in fee: Course material, diploma, coffee, lunches and one dinner
<b>Language:</b>	English
<b>Code:</b>	URP 101

# Current concepts in implant dentistry

– from science to clinical practice



The objective of this course is to update the general dentist and the specialist in the latest advances in the field of implant dentistry, especially in the treatment of the periodontally susceptible patient.

We will review the scientific evidence on important aspects of clinical decision making such as whether to maintain or extract a periodontally compromised tooth. Data from clinical research with evidence derived from selected clinical cases will be presented to illustrate the process of treatment planning and how and when to extract and replace the tooth with a dental implant. Data will also be presented on the risks associated with implant therapy in periodontally susceptible patients and we will illustrate with clinical cases how to prevent and how to manage peri-implant infections.

## When and where?

**March 4-5, 2010**

Astra Tech Conference Center for  
Training & Education, Mölndal, Sweden

## Lecturers

**Jan Lindhe**, DDS, PhD, Professor, Dept. of Periodontology, Institute of Odontology, The Sahlgrenska Academy at the University of Gothenburg, Sweden

**Mariano Sanz**, DDS, PhD, Professor, Dept. of Periodontology, Facultad de Odontología, Universidad Complutense de Madrid, Spain

**Jan Wennström**, DDS, PhD, Professor, Dept. of Periodontology, Institute of Odontology, The Sahlgrenska Academy at the University of Gothenburg, Sweden

## Course content

Different surgical protocols will be reviewed, such as the placement of implants in fresh extraction sockets and the immediate functional loading of implants. The biological processes characteristic of both healing situations will be presented as well as how these principles can be translated into a successful clinical outcome. Finally, the basic principles of achieving esthetically restorative result will be discussed in relation to the application of surgical approaches to both soft and hard tissues.

- The periodontally compromised dentition - extraction vs. periodontal treatment
  - Examination
  - Diagnosis
  - Treatment planning
- Tooth extraction – immediate implant placement
  - Ridge alteration
  - Gap healing
  - Clinical management
- Implants in the periodontally compromised patient
  - Treatment planning strategies
  - How to avoid complications
  - Peri-implantitis
  - Diagnostics and treatment
- Esthetic considerations
  - Biotypes – tissues
  - Basic principles
  - Clinical management
- Maintenance for patients restored with implants
  - Peri-implant disease
  - Diagnosis and risk factors
  - Follow-up strategies

Visit [www.astratehdental.com](http://www.astratehdental.com) for more information about our speakers and a detailed program!



<b>Target group:</b>	Doctors
<b>Duration:</b>	2 days
<b>Participants:</b>	Min. 30
<b>Course fee:</b>	SEK 5,800 ex. VAT. Included in fee: Course material, diploma, coffee, lunches and one dinner.
<b>Language:</b>	English
<b>Code:</b>	CCI 101



# Treatment planning – Ex-press your opinion



In daily practice the clinician needs to make decisions with respect to strategies and the choice of therapy. Which methods do we apply in decision making? What are our background references besides clinical experience?

Clinical problems will be illustrated through case presentations and by use of mentometers the participants can choose among given treatment alternatives, resulting in interactive discussions.

## When and where?

**June 10-11, 2010**

Astra Tech Conference Center for  
Training & Education, Mölndal, Sweden

## Lecturers

**Tord Berglundh**, DDS, PhD, Professor, Dept. of Periodontology, Institute of Odontology, The Sahlgrenska Academy at the University of Gothenburg, Sweden

**Jan Wennström**, DDS, PhD, Professor, Dept. of Periodontology, Institute of Odontology, The Sahlgrenska Academy at the University of Gothenburg, Sweden

## Course content

The outline of the course is based on clinical cases that illustrate different problems. Each case will be described with respect to certain prerequisites and different treatment alternatives to the problems will be presented. A computer-based voting system will be used, by which the course participants will select among the given treatment alternatives. The results from the voting process will be analyzed and variations in the selection of treatment alternatives regarding differences in e.g. professional experience among the participants will be presented. A short review of the scientific background to each of the suggested treatment alternatives will subsequently be provided.

The participants in the course will consequently contribute to the program and the overall goal is to provide a scientific basis for the decision-making process.

### *The clinical problems to be presented in the course include:*

- The esthetic zone
- The posterior maxilla
- Tooth or implant supported fixed prosthesis
- Immediate placement of implants following tooth extraction
- The compromised alveolar ridge
- Implant therapy in the periodontally compromised subject
- Peri-implantitis

Visit [www.astratehdental.com](http://www.astratehdental.com) for more information about our speakers and a detailed program!



<b>Target group:</b>	Doctors
<b>Duration:</b>	2 days
<b>Participants:</b>	Min. 40
<b>Course fee:</b>	SEK 5,800 ex. VAT. Included in fee: Course material, diploma, coffee, lunches and one dinner
<b>Language:</b>	English
<b>Code:</b>	TPE 101

# Treatment strategy and procedures for advanced levels



This seminar offers strategies on decision-making in clinical implant dentistry including classification of cases, risk assessment as well as surgical and prosthetic options.

Knowledge is increased on how to plan and treat advanced cases based on preclinical and clinical evidence. Current options and future perspectives will be presented and discussed regarding soft and hard tissue augmentation techniques and procedures.

## When and where?

**September 3, 2010**

Astra Tech Conference Center for  
Training & Education, Mölndal, Sweden

## Lecturers

**Christoph H. F. Hämmerle**, Prof. Dr. med. dent., Chairman, Clinic for Fixed and Removable Prosthodontics and Dental Material Science, Center for Dental and Oral Medicine and Cranio-Maxillofacial Surgery, University of Zurich, Switzerland

**Ronald E. Jung**, PD Dr. med. dent., Associate Professor and Vice Chairman, Clinic for Fixed and Removable Prosthodontics and Dental Material Science, Center for Dental and Oral Medicine and Cranio-Maxillofacial Surgery, University of Zurich, Switzerland

**Daniel S. Thoma**, Dr. med. dent., Assistant Professor, Clinic for Fixed and Removable Prosthodontics and Dental Material Science, Center for Dental and Oral Medicine and Cranio-Maxillofacial Surgery, University of Zurich, Switzerland

## Course content

### Lectures

- Treatment planning
  - Classification of cases – simple, advanced or complex
  - Risk assessment
  - Decision making for immediate/early or delayed loading
- The surgical phase – considerations and techniques supporting the esthetic outcome
  - Soft tissue augmentation
  - Hard tissue augmentation
  - Implant placement
  - Carriers and growth factors in implant dentistry: where do we stand today?
- The prosthetic phase
  - Temporization

Visit [www.astratechdental.com](http://www.astratechdental.com) for more information about our speakers and a detailed program!



<b>Target group:</b>	Doctors
<b>Duration:</b>	1 days
<b>Participants:</b>	Min. 30
<b>Course fee:</b>	SEK 4,400 ex. VAT. Included in fee: Course material, diploma, coffee and lunch
<b>Language:</b>	English
<b>Code:</b>	TSP 101





## True inspiration for dental professionals

The Astra Tech Conference Center for Training & Education is a center of opportunities and inspiration. At these excellent facilities, located at the Astra Tech headquarters in Mölndal, Sweden, dental professionals from all over the world have experienced numerous in-depth and hands-on training and lectures on basic and advanced topics.

The center allows for live surgery and is equipped with a complete dental laboratory and the latest audiovisual technology. All procedures can be seen through glass windows or close-ups transmitted to screens in different auditoriums. Due to interactive cameras, the participants are able to communicate with the instructor throughout the entire process, even if they are located in a different auditorium.

“ The lecturers were very approachable and down to earth, resulting in good interaction between us and them. The course was extremely informative whilst being fun at the same time.”

*Dr. Michelle McConkey, Norfolk Norwich University Hospital, United Kingdom*







“ It was a very exciting experience. Excellent reception, extended program, very modern facility and training complex. I would certainly advice colleagues to participate in the Astra Tech Training Program.”

Dr. Serge Moschowski, The Netherlands



# Registration information

## Course information

For further information regarding the courses, visit [www.astratechdental.com](http://www.astratechdental.com), contact your local Astra Tech representative or Astra Tech AB, Mölndal, Sweden

## Registration & Confirmation

Register at [www.astratechdental.com](http://www.astratechdental.com) or fill out the registration form found in this brochure. Please e-mail or fax it to your local representative or to:

Astra Tech AB, Business Unit Dental  
P.O. Box 14, SE-431 21 Mölndal, Sweden  
Phone: +46 31 776 30 00 Fax: +46 31 776 30 12  
E-mail: [education.dental@astratech.com](mailto:education.dental@astratech.com)

As soon as we have received your registration form, we will send you a confirmation. Prior to the course, you will receive a letter of invitation with all relevant information.

## Hotel accommodation

If you would like us to assist you with hotel reservations, please state arrival and departure dates when registering. Transportation between our suggested hotel and the course venue will be arranged during the course.

## Methods of payment

Payment is made by invoice to the invoicing address stated when registering.

If paying by SWIFT\*, please ask your bank to arrange this transfer to our bank:

Skandinaviska Enskilda Banken, Stockholm, Sweden

Astra Tech AB, account number 5164-11 927 71

SWIFT address: ESSESESS

IBAN-Account No: SE33 50000 0000 51641192771

Note that Swedish VAT will be added for Swedish participants.

## Cancellation policy

Cancellation made six to four weeks prior to the course: 75% of the course fee will be refunded.

Cancellation made four to two weeks before the course starts: 50% of the course fee will be refunded.

Cancellation made later than two weeks before the course starts: No refund.

Astra Tech AB reserves the right to cancel a course in the event of too few participants. The fee will be refunded in full.

For further information, please contact your local Astra Tech representative or Astra Tech AB, Mölndal, Sweden.

\* Society of Worldwide Interbank Financial  
Telecommunication

# Registration form

Please write in capital letters.

Title: \_\_\_\_\_  Male  Female

First name: \_\_\_\_\_

Last name: \_\_\_\_\_

Office address: \_\_\_\_\_  
\_\_\_\_\_

Country: \_\_\_\_\_

Phone: \_\_\_\_\_

Cell phone: \_\_\_\_\_

E-mail: \_\_\_\_\_

Your specialty/profession:

Maxillo-facial surgeon

General practitioner

Prosthodontist

Oral surgeon

Periodontist

Dental technician

Other, please specify: \_\_\_\_\_

Number of implant patients treated:

0-5  5-20  20-50  50-100  100+

Experience with Astra Tech implant system:

Yes  No

Code and name of course: \_\_\_\_\_ Course date: \_\_\_\_\_ Fee: \_\_\_\_\_

Arrival date: \_\_\_\_\_ Departure date: \_\_\_\_\_ Special dietary needs: \_\_\_\_\_

Hotel reservation:  Yes

No

Single room

Double room

Please send me further information about Astra Tech Training and Education activities.

Methods of payment – Invoice

Invoice address: \_\_\_\_\_  
\_\_\_\_\_

Date: \_\_\_\_\_ Signature: \_\_\_\_\_

# Registration form

Please write in capital letters.

Title: \_\_\_\_\_  Male  Female

First name: \_\_\_\_\_

Last name: \_\_\_\_\_

Office address: \_\_\_\_\_  
\_\_\_\_\_

Country: \_\_\_\_\_

Phone: \_\_\_\_\_

Cell phone: \_\_\_\_\_

E-mail: \_\_\_\_\_

Your specialty/profession:

Maxillo-facial surgeon

General practitioner

Prosthodontist

Oral surgeon

Periodontist

Dental technician

Other, please specify: \_\_\_\_\_

Number of implant patients treated:

0-5  5-20  20-50  50-100  100+

Experience with Astra Tech implant system:

Yes  No

Code and name of course: \_\_\_\_\_ Course date: \_\_\_\_\_ Fee: \_\_\_\_\_

Arrival date: \_\_\_\_\_ Departure date: \_\_\_\_\_ Special dietary needs: \_\_\_\_\_

Hotel reservation:  Yes

No

Single room

Double room

Please send me further information about  
Astra Tech Training and Education activities.

Methods of payment – Invoice

Invoice address: \_\_\_\_\_  
\_\_\_\_\_

Date: \_\_\_\_\_ Signature: \_\_\_\_\_

# Summary 2010

## Training & Education Program

### FEBRUARY

February 13

**Implant overdenture therapy hands-on course, Code AT 1002**

Location: Iowa, USA, Language: English

Course fee: USD 415

page 13

### MARCH

March 4-5

**Current concepts in implant dentistry  
– from science to clinical practice, Code CCI 101**

Location: Mölndal, Sweden, Language: English

Course fee: SEK 5,800 ex. VAT.

page 25

March 11-13

**Advanced surgical techniques in implantology,  
Code AST 101**

Location: Paris, France, Language: English and/or Italian

Course fee: EUR 2,200

page 7

March 12-14

**Implant therapy in the esthetic zone, Code AT 1006**

Location: Los Angeles, USA, Language: English

Course fee: Before February 1, 2010: USD 1,795

After February 1, 2010: USD 1,995

page 14

March 24-26

**Advanced implant surgery with focus on different bone  
grafting procedures, Code AIS 101**

Location: Copenhagen, Denmark, Language: English

Course fee: SEK 16,400 ex. VAT.

page 8

March 25-27

**Computer guided implantology, Code AT 1007**

Location: Houston, USA, Language: English

Course fee: Thursday evening (software training): USD 250

Friday and Saturday: USD 1,990

page 21

### APRIL

April 16

**Facilitate™ software training, Code CGT 101**

Location: Leuven, Belgium, Language: English

Course fee: EUR 295 ex. VAT

page 20

### MAY

May 6-7

**Contemporary implant prosthodontics, Code CIP 101**

Location: Mölndal, Sweden, Language: English

Course fee: SEK 11,200 ex. VAT.

page 12

May 27-28

**Implant surgery in difficult cases, Code ISD 101**

Location: Göteborg, Sweden, Language: English

Course fee: SEK 12,400 ex. VAT.

page 6

### JUNE

June 3-4

**Clinical and research observations on implants, Code CRO 101**

Location: Padova, Italy, Language: English

Course fee: EUR 900 ex. VAT.

page 15

June 10-11

**Treatment planning – Ex-press your opinion, Code TPE 101**

Location: Mölndal, Sweden, Language: English

Course fee: SEK 5,800 ex. VAT.

page 26

June 11-13

**Advanced implant restoration, Code AT 1011**

Location: Los Angeles, USA, Language: English

Course fee: Before May 1, 2010: USD 1,795

After May 1, 2010: USD 1,995

page 16

June 18

**Abutment design, Code ABD 101**

Location: Mölndal, Sweden, Language: English

Course fee: SEK 3,600 ex. VAT.

page 23

### SEPTEMBER

September 3

**Treatment strategy and procedures for advanced levels,  
Code TSP 101**

Location: Mölndal, Sweden, Language: English

Course fee: SEK 4,400 ex. VAT.

page 27

September 16-17

**Surgical and prosthetic options in implant dentistry,  
Code SPO 101**

Location: Zagreb, Croatia, Language: English

Course fee: SEK 11,200 ex. VAT.

page 17

September 30 - October 2

**Advanced implant dentistry, Code AID 101**

Location: Zurich, Switzerland, Language: English

Course fee: CHF 3,600 ex. VAT

page 18



# Summary 2010

## Training & Education Program

### OCTOBER

October 14-15

**Advanced implant surgery with focus on sinus lift and minor bone grafting procedures, Code AIS 102**

Location: Göteborg, Sweden, Language: English

Course fee: SEK 12,500 ex. VAT. page 9

October 14-16

**Advanced surgical techniques in implantology, Code AST 102**

Location: Paris, France, Language: English and/or Italian

Course fee: EUR 2,200 page 7

October 27-29

**Advanced implant surgery with focus on different bone grafting procedures, Code AIS 103**

Location: Copenhagen, Denmark, Language: English

Course fee: SEK 16,400 ex. VAT. page 8

### NOVEMBER

November 4-5

**Advanced implant surgery with focus on minor bone grafting procedures, Code AIS 104**

Location: Copenhagen, Denmark, Language: English

Course fee: SEK 15,100 ex. VAT. page 10

November 4-5

**Unlimited restorative possibilities with Astra Tech Dental, Code URP 101**

Location: Mölndal, Sweden, Language: English

Course fee: SEK 4,900 ex. VAT. page 24

November 10-12

**Advanced implant surgery with focus on maxillary reconstruction with or without bone substitute, Code AIS 105**

Location: Gävle, Sweden, Language: English

Course fee: SEK 13,900 ex. VAT. page 11

November 26

**Facilitate™ software training, Code CGT 102**

Location: Leuven, Belgium, Language: English

Course fee: EUR 295 ex. VAT. page 20

November 29-30

**Facilitate™ computer guided implant treatment, Code CGT 103**

Location: Mölndal, Sweden, Language: English

Course fee: SEK 12,500 ex. VAT. page 22

### DECEMBER

December 6-7

**Implant treatment in difficult cases, Code ITD 101**

Location: London, United Kingdom, Language: English

Course fee: SEK 13,400 ex. VAT. page 19



**Australia**

Astra Tech Pty Ltd.  
Suite 1, 53 Grandview St, Pymble NSW 2073  
☎ +61 2 9488 3500. 📠 +61 2 9440 0744  
www.astratechdental.com.au

**Austria**

Astra Tech GesmbH  
Schloßhofer Straße 4/4/19, AT-1210 Wien  
☎ +43-(0)1-2146150. 📠 +43-(0)1-2146167  
www.astratechdental.at

**Benelux**

Astra Tech Benelux B.V.  
Signaalrood 55, NL-2718 SG Zoetermeer  
☎ +31 79 360 1955/+32 3 232 81 50  
📠 +31 79 362 3748/+32 3 213 30 66  
www.astratechdental.nl

**Canada**

Astra Tech Inc.  
2425 Matheson Blvd East, 8th Floor  
Mississauga, ON L4W 5K4  
☎ +1 905 361 2844  
www.astratechdental.com

**Denmark**

Astra Tech A/S  
Roskildevej 163, 1. th., DK-2620 Albertslund  
☎ +45 43 71 33 77. 📠 +45 43 71 78 65  
www.astratechdental.dk

**East Asia**

Astra Tech  
Suite 15.02, 15th Floor Menara PanGlobal  
No. 8 Lorong P Ramlee, MY-50250, Kuala Lumpur  
Malaysia  
☎ +60 3 27 11 2531. 📠 +60 3 27 11 2532  
www.astratechdental.com

**Finland**

Astra Tech Oy  
PL 96, FI-02231 Espoo  
☎ +358 9 8676 1626. 📠 +358 9 804 4128  
www.astratechdental.fi

**France**

Astra Tech France  
7, rue Eugène et Armand Peugeot, TSA 90002  
FR-92563 Rueil Malmaison Cedex  
☎ +33 1 41 39 02 40. 📠 +33 1 41 39 02 44  
www.astratechdental.fr

**Germany**

Astra Tech GmbH  
An der kleinen Seite 8. DE-65604 Elz  
☎ +49 6431 9869 0. 📠 +49 6431 9869 500  
www.astratechdental.de

**Italy**

Astra Tech S.p.A.  
Via Cristoni, 86, IT-40033 Casalecchio di Reno (BO)  
☎ +39 051 29 87 511. 📠 +39 051 29 87 580  
www.astratechdental.it

**Japan**

Astra Tech K.K.  
1-7-16 Sendagaya, Shibuya-ku, Tokyo 151-0051  
☎ +81 3 5775 0515. 📠 +81 3 5775 0571  
www.astratech.jp

**Norway**

Astra Tech AS  
Postboks 160, NO-1471 Lørenskog  
☎ +47 67 92 05 50. 📠 +47 67 92 05 60  
www.astratechdental.no

**Poland**

Astra Tech Sp.z o.o.  
ul. Orężna 58, PL-02-937 Warszawa  
☎ +48 22 853 67 06. 📠 +48 22 853 67 10  
www.astratechdental.pl

**Portugal**

Astra Tech  
Lagoas Park, Edifício 8 – 1º piso  
PT-2740-268 Porto Salvo  
☎ +351 21 421 2273. 📠 +351 21 421 0234  
www.astratechdental.pt

**Spain**

Astra Tech S.A.  
Calle Ciencias nº 73 derecha. Nave 9,  
Polígono Industrial Pedrosa,  
ES-08908 L'Hospitalet de Llobregat  
☎ Servicio al cliente: +34.902.101.558  
☎ +34.932.643.560. 📠 +34.933.363.231  
www.astratechdental.es

**Sweden**

Astra Tech AB  
P.O. Box 14, SE-431 21 Mölndal  
☎ +46 31 776 30 00. 📠 +46 31 776 30 17  
www.astratechdental.se

**Switzerland**

Astra Tech SA  
Avenue de Sévelin 18, P.O. Box 54  
CH-1000 Lausanne 20  
☎ +41 21 620 02 30. 📠 +41 21 620 02 31  
www.astratechdental.ch

**United Kingdom**

Astra Tech Ltd.  
Brunel Way, Stonehouse, Glos GL10 3SX  
☎ +44 845 450 0586. 📠 +44 1453 791001  
www.astratechdental.co.uk

**USA**

Astra Tech Inc.  
590 Lincoln Street, Waltham, MA 02451  
☎ +1-800-531-3481. 📠 +1-781-890-6808  
www.astratechdental.com

**Other Markets**

Astra Tech AB, Export Department  
P.O. Box 14, SE-431 21 Mölndal, Sweden  
☎ +46 31 776 30 00. 📠 +46 31 776 30 23  
www.astratechdental.com

